



RAYCO

A MORBARK® COMPANY



MADE FOR **MORE** TO KEEP PACE WITH **YOU!**

C200 FORESTRY MULCHER

For the ultimate in compact, powerful mulchers, look no further than Rayco's C200. Its narrow profile makes the C200 the ultimate for ROW clearing on narrow lines as well as for use in larger-scale clearing projects. The operator cabin is comfortable and spacious, with a high-backed, heated seat with air-ride suspension. The rear fan is auto-reversing, reducing maintenance time.

FEATURES AND BENEFITS

- Powerful 188-HP Isuzu diesel engine
- Available with Rayco Predator or Denis Cimaf Mulcher heads, with 6-foot cutting width
- 66 gpm hydraulic output to the mulcher
- Heavy-duty rubber track undercarriage
- 20-inch wide steel tracks
- 2-speed ground travel
- Hydraulic rear winch
- Hydraulic cab tilt
- Certified ROPS/FOPS/OPS Cab
- Rear view camera with dedicated monitor
- Roof-top and side escape hatches
- High-output LED work lights



MORBARKDEALERS.COM



MORBARK®

C200 FORESTRY MULCHER

SPECIFICATIONS

GENERAL	C200RA US (METRIC)	C200SA US (METRIC)
Weight of Carrier with Winch & FM200-6DR Mulcher	20,760 lb (9,416.6 kg)	21,760 lb (9,870 kg)
Length of Carrier with Winch & FM200-6DR Mulcher	19'1" (5.8 m)	
Height	8'6" (2.7 m)	
Width	7'6" (2.3 m)	7'5" (2.3 m)
Engine	188-HP (140.2 kW) Isuzu 5.2 L T4F	
Fuel Type	Diesel	
Fuel Capacity	64 gallon (242 L)	
Hydraulic Tank	20 gallon (75.7 L)	
High Flow Hydrostatic	66 gpm • 5,800 psi (250 L/min • 400 bar)	
Ground Pressure with FM200-6DR Mulcher	5.71 psi (39.4 kPa)	
Track Width	20" (500 mm)	18" (450 mm)
Travel Speed High	4.8 mph (7.7 km/h)	
Travel Speed Low	2.7 mph (4.3 km/h)	
Cab Certifications	ROPS ISO 8082 • FOPS ISO 8083 • OPS ISO 8084/WCB G603	

PREDATOR MULCHER HEAD & DENIS CIMAF MULCHER HEAD

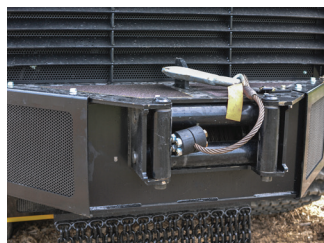
Standard Predator Mulcher Head Model	FM200-6DR
Weight	3,200 lb (1,451.5 kg)
Overall Width	7'2" (219 cm)
Rotor Diameter	17" (43 cm)
Rotor Speed	2,052 RPM
Cutting Width	5'8" (1.7 m)
Ground Pressure	5.7 psi
Max Mowing Height	8'7" (2.6 m)
Cutter Teeth	36 Carbide Tipped
Optional Denis Cimag Model	FM200-6CA
Weight	3,075 lb (1,395 kg)
Overall Width	7'3" (2.2 m)
Rotor Diameter	18" (46 cm)
Rotor Speed	2,500 RPM
Ground Pressure	5.3 psi (36.6 kPa)
Cutting Width	6'2" (2 m)
Max Mowing Height	8'7" (2.6 m)
Cutter Teeth	27 Planer Knives



Protected LED Lights (9700 total lumens)



Rooftop escape hatch and full color, dedicated backup camera display



20,000 lb capacity, hydraulic winch



20" (500mm) wide rubber track

02-2023